

Demonstration Chart Report

Created on Friday, March 1, 2019

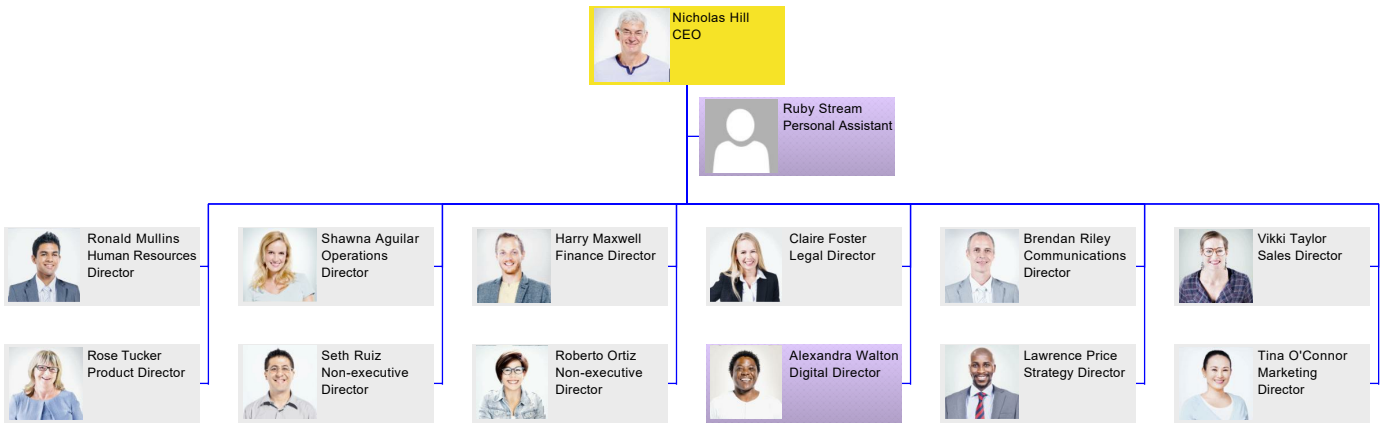
Table of Contents

Demonstration Chart	3
Nicholas Hill - CEO	3
Ronald Mullins - Human Resources Director	4
Shawna Aguilar - Operations Director	5
Harry Maxwell - Finance Director	6
Claire Foster - Legal Director	7
Brendan Riley - Communications Director	8
Vikki Taylor - Sales Director	9
Rose Tucker - Product Director	10
Alexandra Walton - Digital Director	11
Lawrence Price - Strategy Director	12
Tina O'Connor - Marketing Director	13
Doreen Valdez - Head of Employee Relations	14
Audrey Mann - Head of Compensation Analysis	15
Jonathon Farmer - Head of Talent Acquisition	16
Linda Patrick - Head of Employee Health Services	17
Lana Hopkins - Head of Benefits Administration	18
Wilbur Benson - Head of Workforce Safety	19
Shannon Caldwell - Head of Training and Development	20
Traci Williams - Head of Risk Management	21
Wallace Goodman - Customer Success Manager	22
Bruce Lucas - Logistics Manager	23
Greg Williamson - Partner Relations Manager	24
Myra Banks - Partnership Relations Manager	25

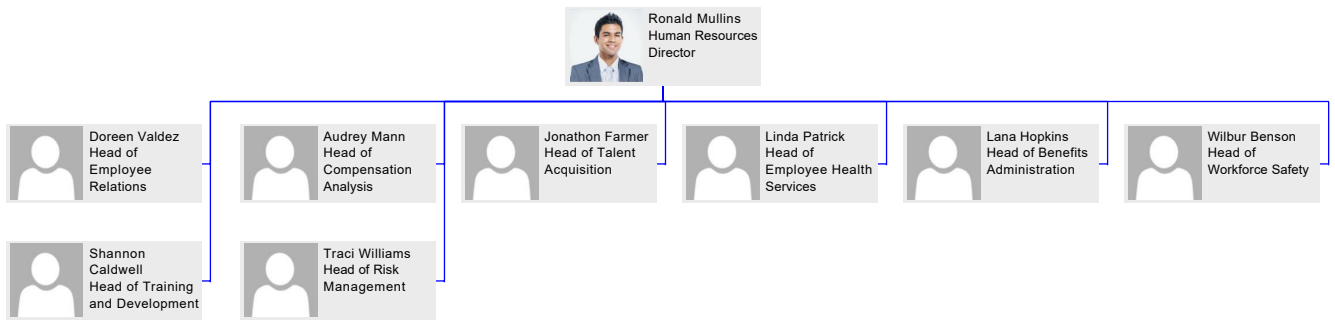
Demonstration Chart

Organization Chart Report - by TeamOrgChart.Com

Nicholas Hill - CEO

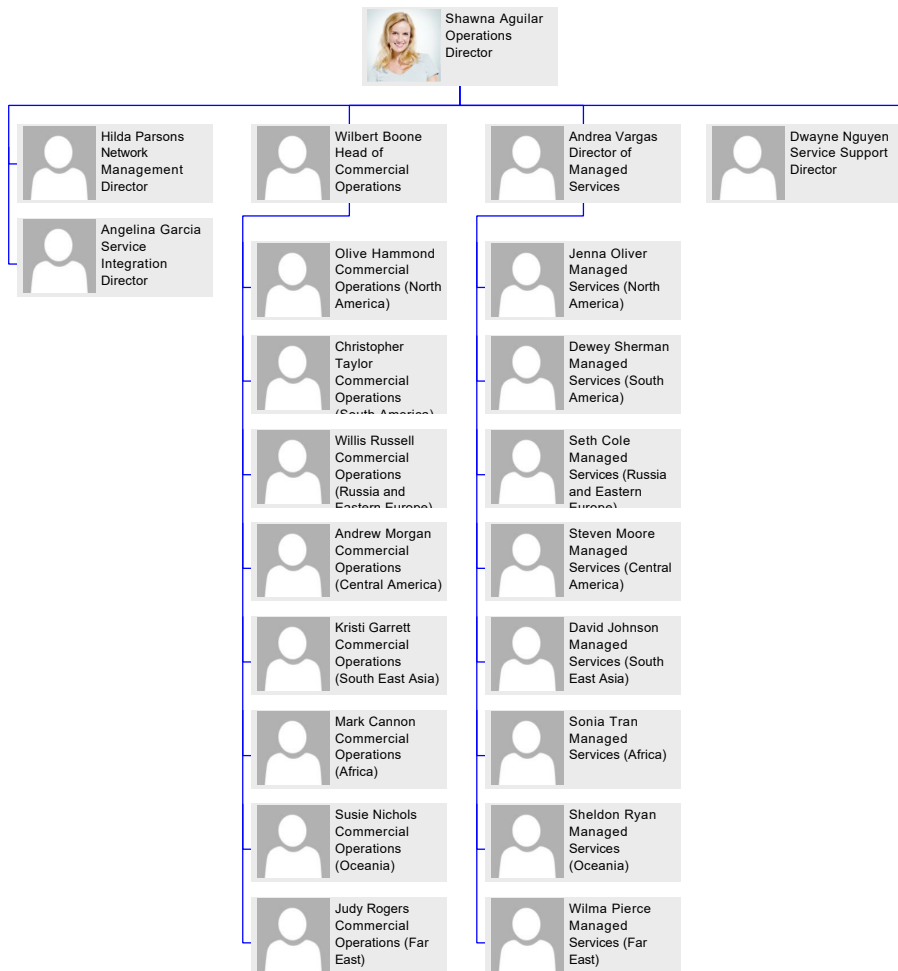


Ronald Mullins - Human Resources Director



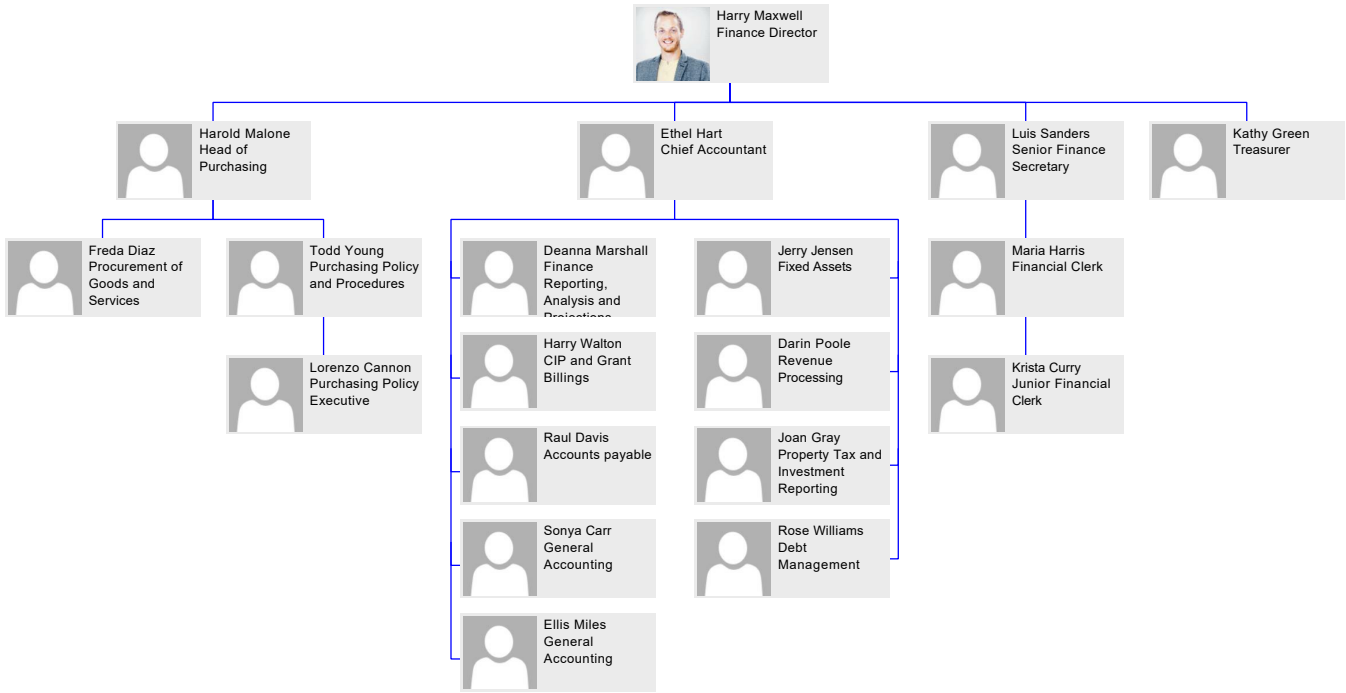
[Ronald Mullins - Reports to Nicholas Hill](#)

Shawna Aguilar - Operations Director



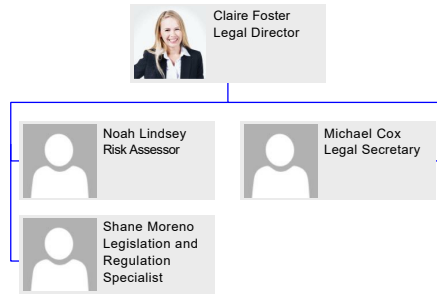
[Shawna Aguilar - Reports to Nicholas Hill](#)

Harry Maxwell - Finance Director



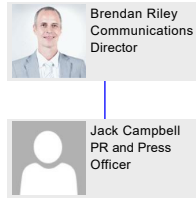
[Harry Maxwell - Reports to Nicholas Hill](#)

[Claire Foster - Legal Director](#)



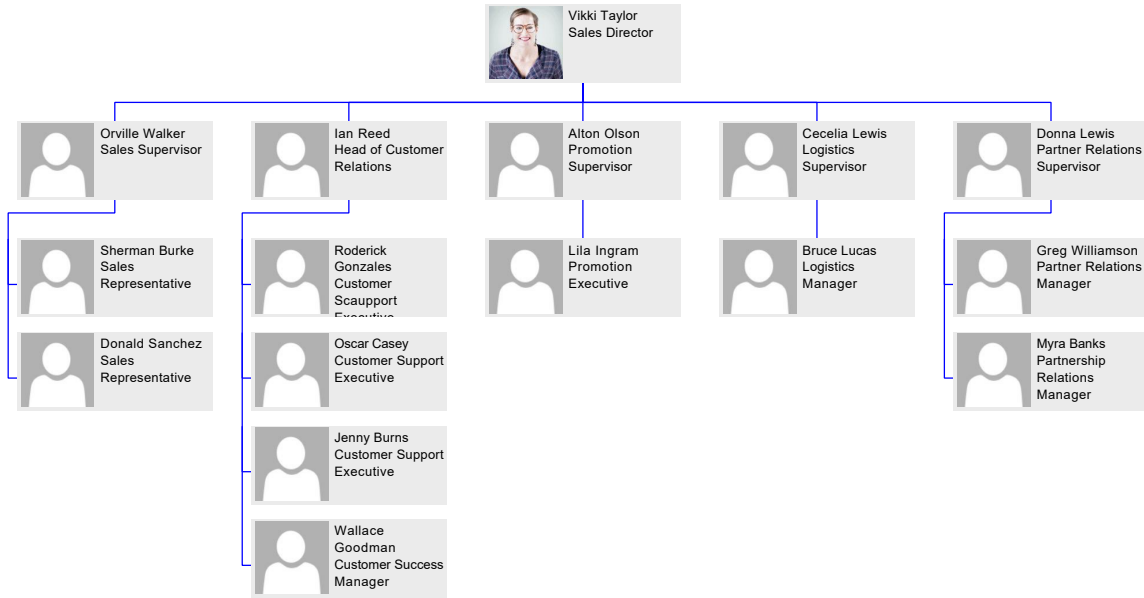
[Claire Foster - Reports to Nicholas Hill](#)

Brendan Riley - Communications Director



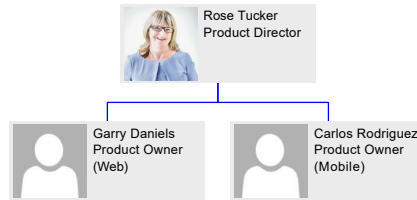
[Brendan Riley - Reports to Nicholas Hill](#)

Vikki Taylor - Sales Director



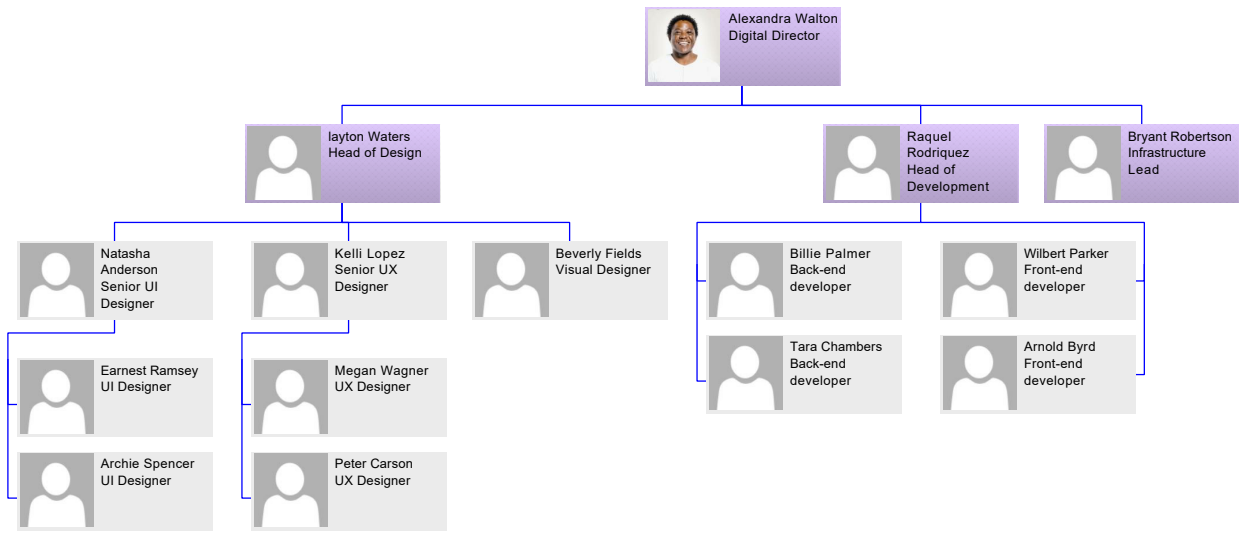
[Vikki Taylor - Reports to Nicholas Hill](#)

[Rose Tucker - Product Director](#)



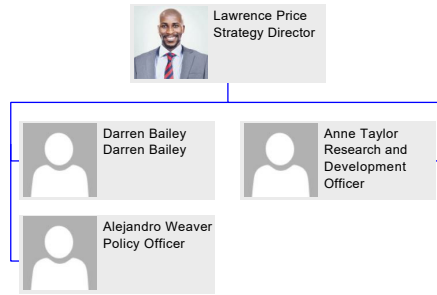
[Rose Tucker - Reports to Nicholas Hill](#)

Alexandra Walton - Digital Director



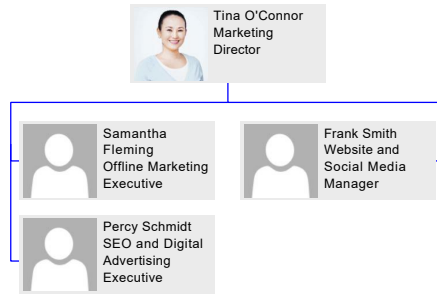
[Alexandra Walton - Reports to Nicholas Hill](#)

[Lawrence Price - Strategy Director](#)



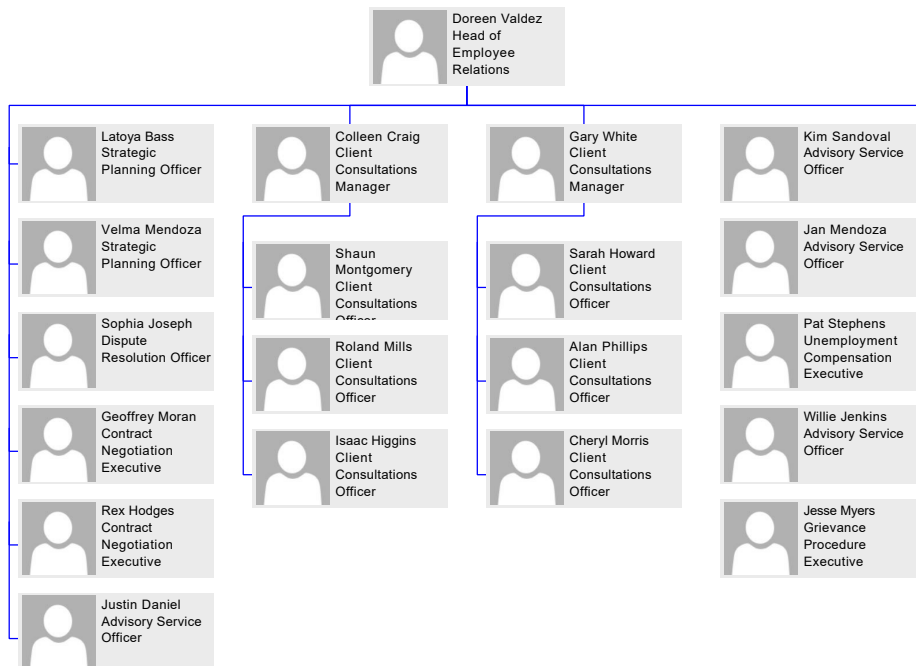
[Lawrence Price - Reports to Nicholas Hill](#)

[Tina O'Connor - Marketing Director](#)



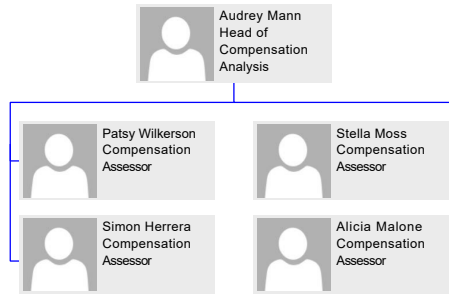
[Tina O'Connor - Reports to Nicholas Hill](#)

Doreen Valdez - Head of Employee Relations



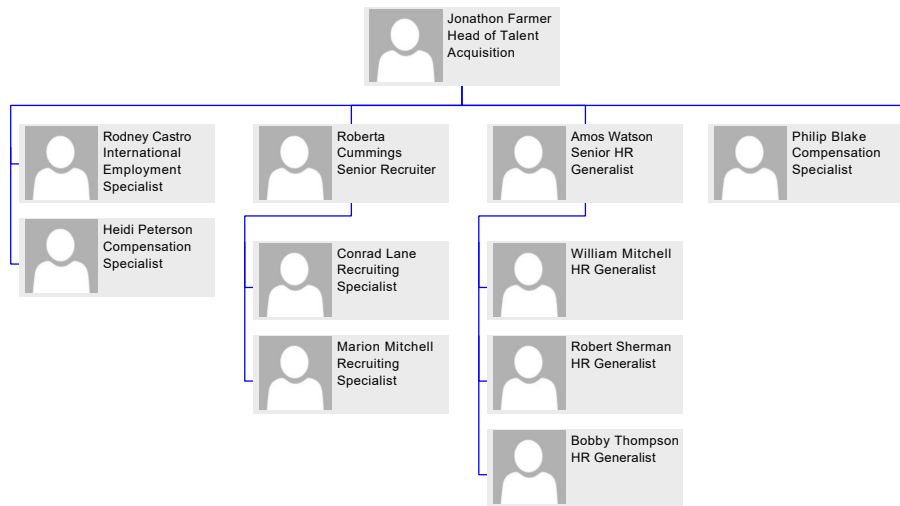
[Doreen Valdez - Reports to Ronald Mullins](#)

Audrey Mann - Head of Compensation Analysis



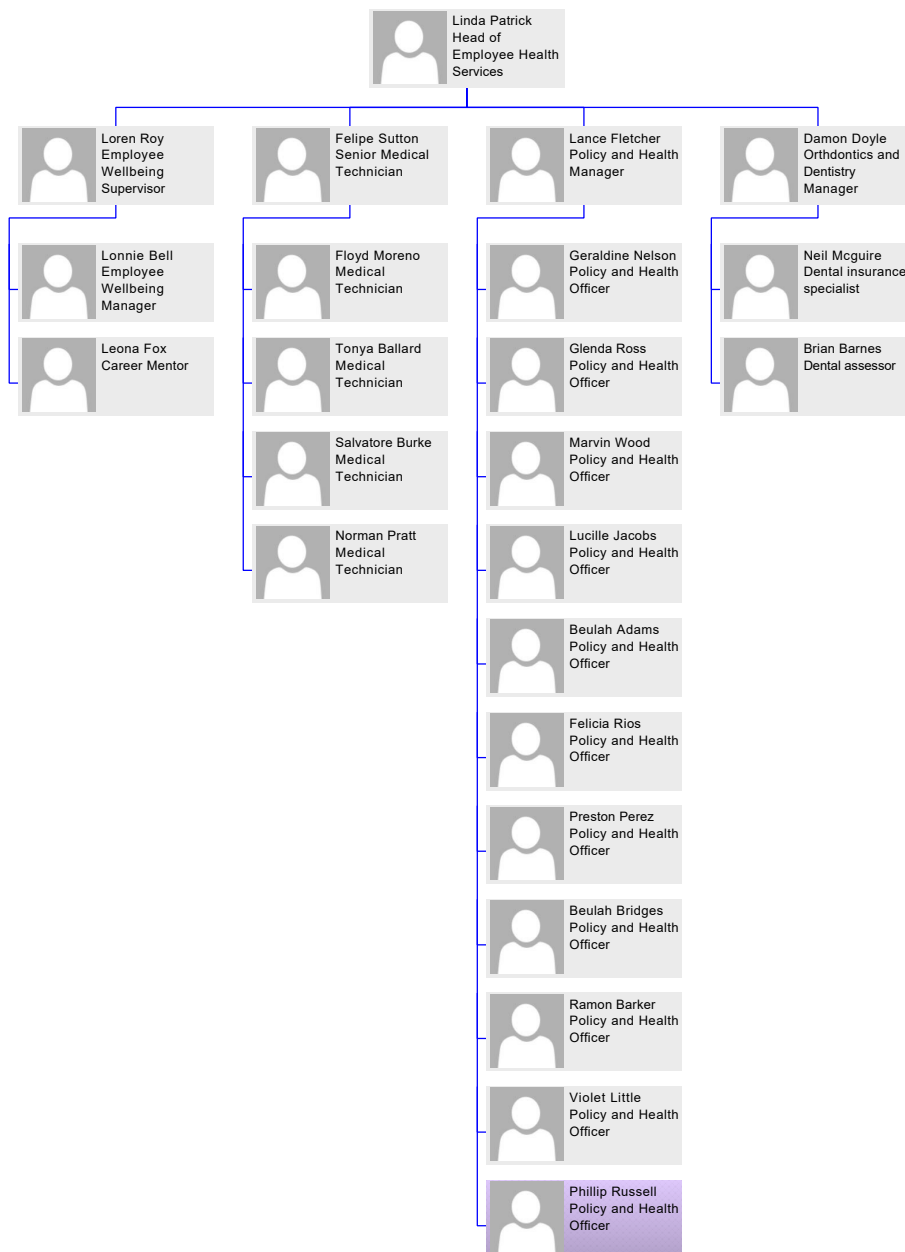
[Audrey Mann - Reports to Ronald Mullins](#)

[Jonathon Farmer - Head of Talent Acquisition](#)



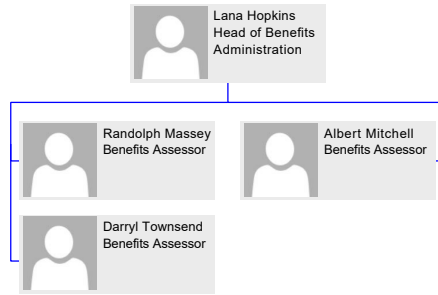
[Jonathon Farmer - Reports to Ronald Mullins](#)

Linda Patrick - Head of Employee Health Services



[Linda Patrick - Reports to Ronald Mullins](#)

[Lana Hopkins - Head of Benefits Administration](#)



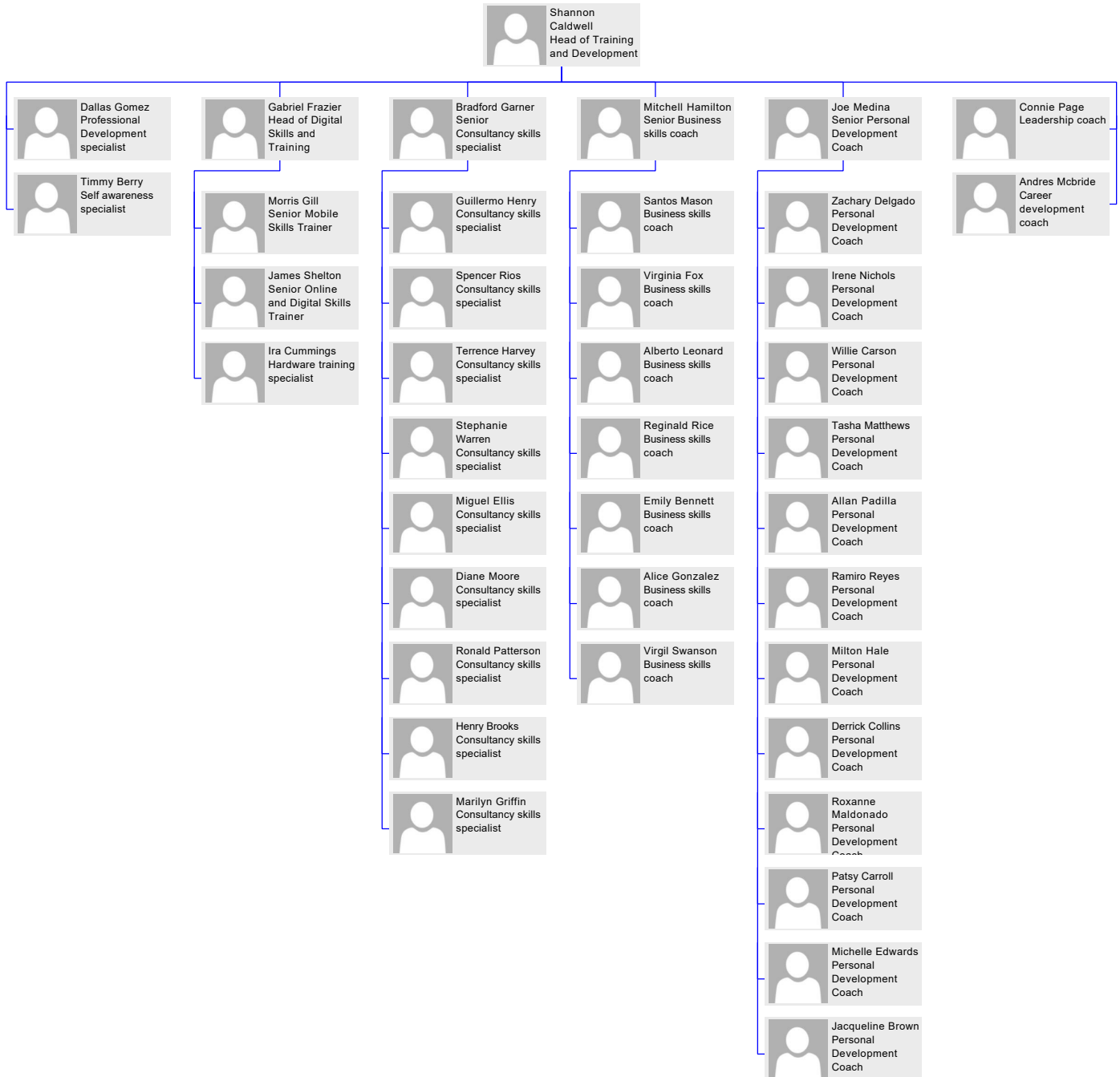
[Lana Hopkins - Reports to Ronald Mullins](#)

Wilbur Benson - Head of Workforce Safety



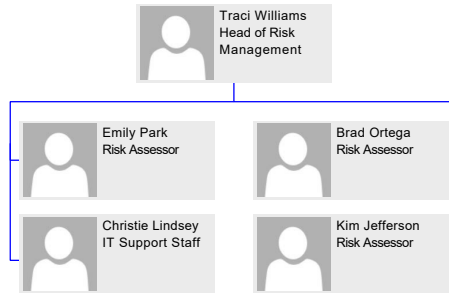
[Wilbur Benson - Reports to Ronald Mullins](#)

Shannon Caldwell - Head of Training and Development



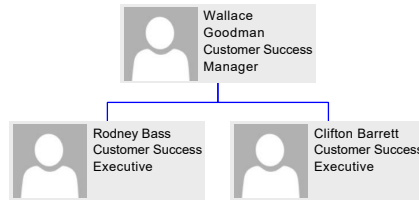
[Shannon Caldwell - Reports to Ronald Mullins](#)

[Traci Williams - Head of Risk Management](#)



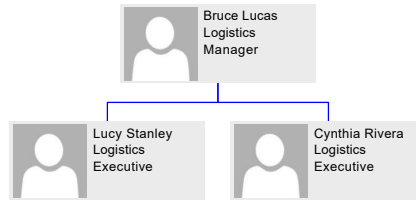
[Traci Williams - Reports to Ronald Mullins](#)

Wallace Goodman - Customer Success Manager



[Wallace Goodman - Reports to Ian Reed](#)

[Bruce Lucas - Logistics Manager](#)



[Bruce Lucas - Reports to Cecelia Lewis](#)

[Greg Williamson - Partner Relations Manager](#)



[Greg Williamson - Reports to Donna Lewis](#)

[Myra Banks - Partnership Relations Manager](#)



[Myra Banks - Reports to Donna Lewis](#)